

Live the life you so  
richly deserve.



# new way to feel more at home.

---

**In many ways, life at Somerby Peachtree City is just what you would imagine. Spacious apartments. A caring staff. The beautiful Georgia surroundings. But it only takes a slightly deeper look to discover that it offers all those things and so much more.**

Somerby Peachtree City is operated by Bridge Senior Living. Which means we go beyond the expected. We strive to care more. To innovate more. To inspire more. All to help you create a lifestyle that is as abundant and fulfilling as you dare to dream.

SOMERBY   
PEACHTREE CITY







# The beauty of Georgia inside and out.

---

Somerby Peachtree City is tucked in a wooded enclave in the southeast area of Peachtree City. But its location is just as convenient as it is peaceful, so you're never far from whatever you want – be that a relaxing night at home or an evening on the town.

## Where are we?

200 Rock-A-Way Road

Peachtree City, GA 30269

866-699-3986



IMAGES OF THE PEACHTREE CITY, GA SURROUNDING AREA





IMAGES OF THE PEACHTREE CITY, GA SURROUNDING AREA

# A sanctuary for every season.

---

On the journey of life, we sometimes get to choose our paths, and sometimes we encounter unexpected detours that lead to new adventures.

As a Bridge Senior Living community, Somerby Peachtree City helps create rewarding lifestyles for all our residents. With Independent Living, Assisted Living, Memory Care, Respite Care, and Therapy Care options, along with round-the-clock expert health services and support, life here always fosters a sense of serenity, safety, and satisfaction.





# Independent Living

---

## **Home is where the heart is and the hard work isn't.**

Whether you call it maintenance-free, worry-free, or stress-free, the key word in all those descriptions is “free.” Because that’s what Independent Living at Somerby Peachtree City is all about – giving you freedom from the worry and responsibility of house ownership, and the freedom to do, well, whatever you like.

*A few features of Independent Living at Somerby Peachtree City include:*

- *Full-service dining facilities with chef-prepared meals, including a daily breakfast buffet and Sunday brunch*
- *Weekly – and thorough – housekeeping*
- *The peace of mind of knowing that daily assistance is just moments away*
- *Arranged transportation for shopping and appointments off-site*
- *Activities, events, and programs that you’re sure to enjoy*

Our villas feature an identical floor plan and feature two bedrooms and two baths as part of their spacious 1,357 sq. ft. design – so there’s always plenty of room for friends and family to gather. Apartments are available in nine floor plans ranging from 1-bedroom/1-bath to 3-bedroom/2-bath.

**Starting at \$4,295**  
All apartments include:

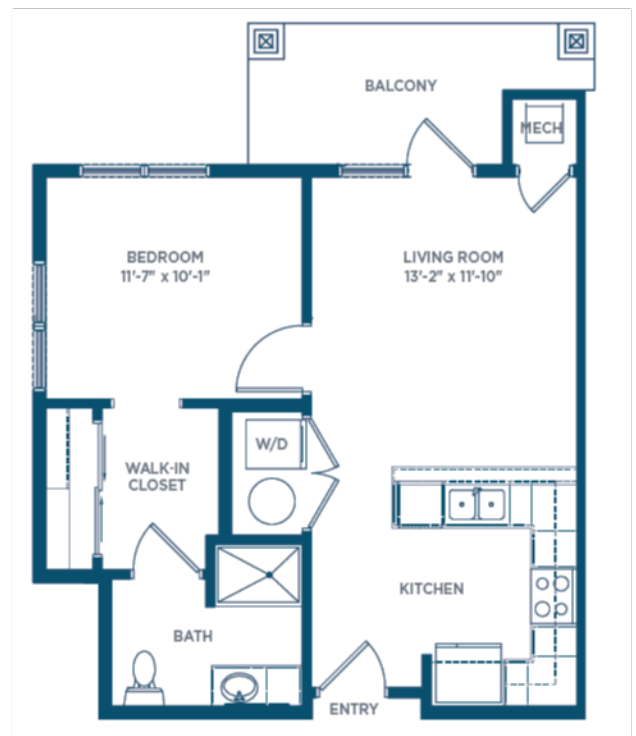
- Individual thermostat controls
- Modern kitchens with full-size appliances
- Washers and dryers in each apartment
- Utilities
- Housekeeping
- Trash service
- Pest control
- No property taxes

If you think moving in means leaving your furry loved one behind, it doesn't. All apartments at Somerby Peachtree City are pet-friendly.



### The Azalea

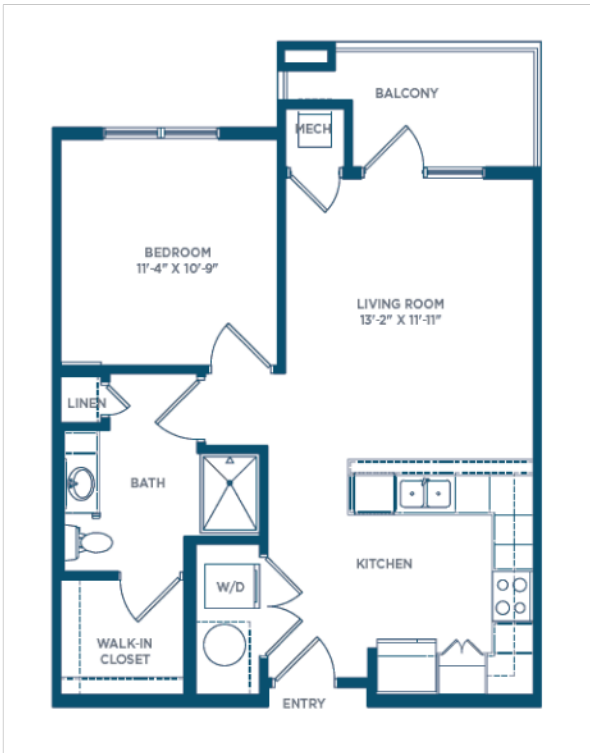
628 sq. ft. — 1 Bedroom/1 Bath





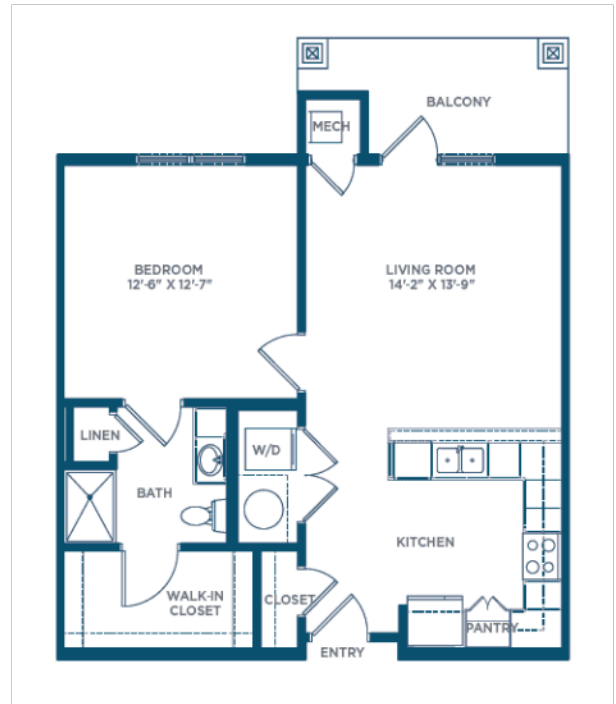
**The Boxwood**

707 sq. ft. — 1 Bedroom/1 Bath



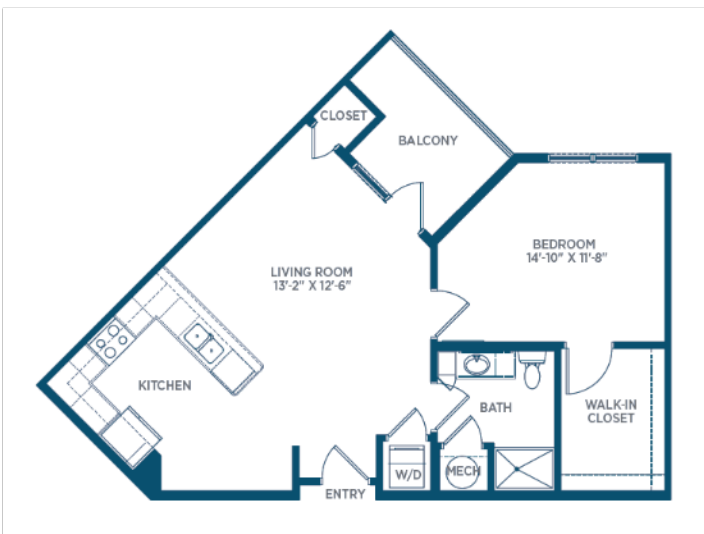
**The Cypress**

765 sq. ft. — 1 Bedroom/1 Bath



**The Cherry**

788 sq. ft. — 1 Bedroom/1 Bath



**The Dogwood**

822 sq. ft. — 1 Bedroom/1 Bath



# Independent Living

## The Elm

1,033 sq. ft. — 2 Bedroom/2 Bath



## The Evergreen

1,073 sq. ft. — 2 Bedroom/2 Bath





# Independent Living

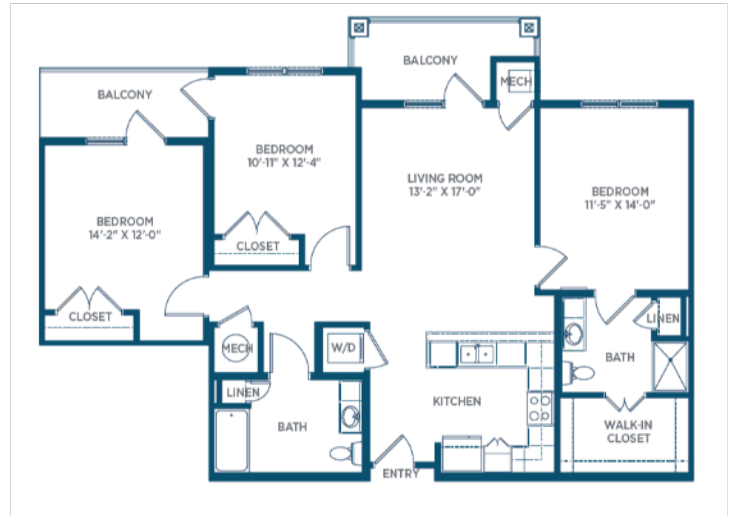
## The Forsythia

1,143 sq. ft. — 2 Bedroom/2 Bath



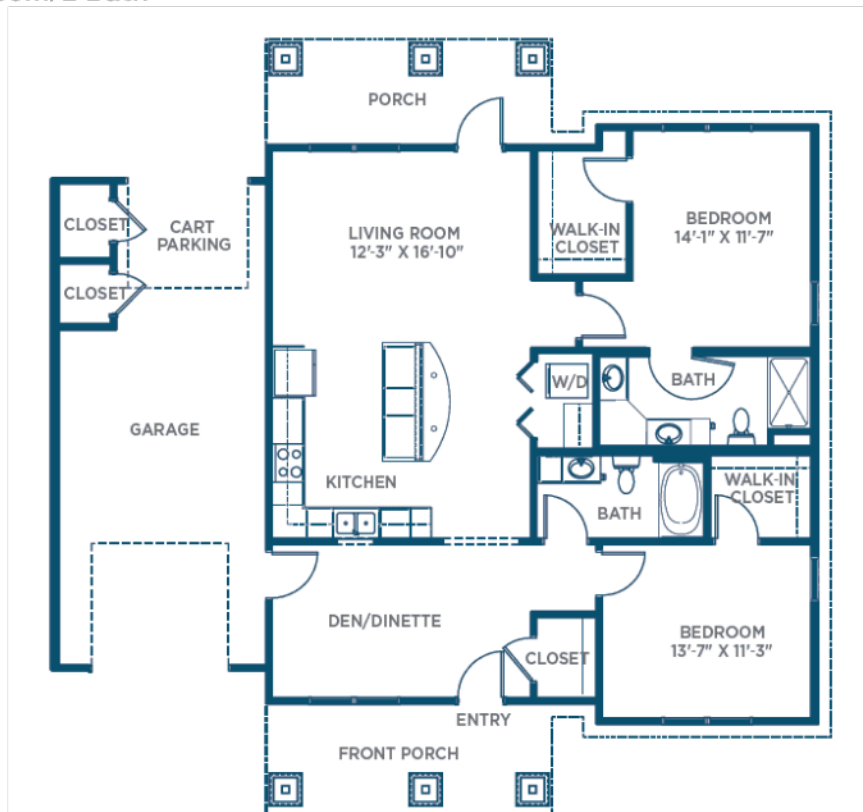
## The Grande

1,354 sq. ft. — 3 Bedroom/2 Bath



## The Villa

1,357 sq. ft. — 2 Bedroom/2 Bath





**Your desire to stay active can still be fulfilled, thanks to the expert care of Somerby Peachtree City's friendly professionals.**

# Assisted Living

---

## **A helping hand toward a happier life.**

With the support of friends and family, aging successfully is rarely a solitary achievement. But sometimes, the need for more consistent help arises. Fortunately, your desire to stay active can still be fulfilled, thanks to the expert care of Somerby Peachtree City's friendly professionals.

Naturally, help is available daily, so your security is ensured. We also feature an emergency response system, daily check-ins, and a medication management service so you never have to worry about what to take or when.

***A few other common ways our associates assist with daily activities include:***

- ***Assistance with bathing and dressing as needed***
- ***Help getting in and out of bed***
- ***Help getting to meals and other activities***
- ***Additional assistance at mealtime if needed***
- ***Discreet personal care whenever needed***



For Assisted Living residents, we offer eight floor plans in either studio/1-bath or 1-bedroom/1-bath layouts.

Like all of our apartments, they feature an open, contemporary design along with modern appliances.

**Starting at \$4,795**  
All apartments include:

- Individual thermostat controls
- Kitchenette
- Utilities
- Housekeeping
- Trash service
- Pest control
- No property taxes

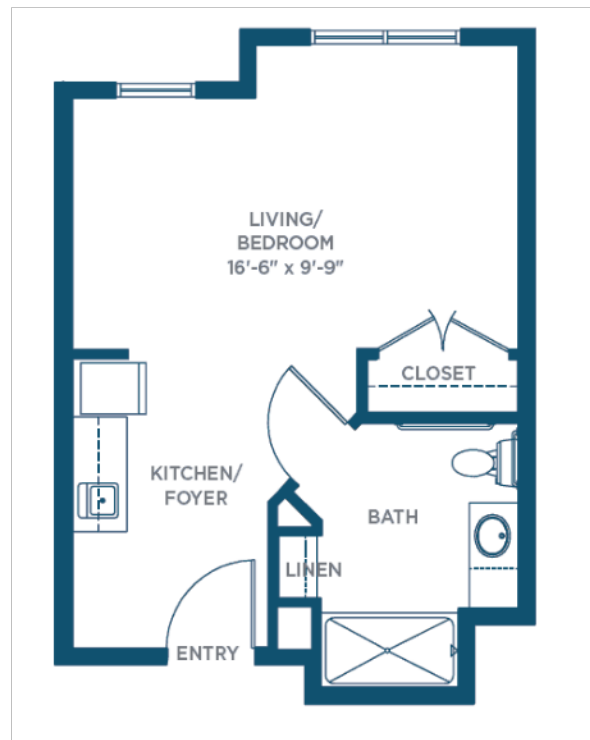
Of course, they're pet-friendly too.

\*Additional costs may apply.



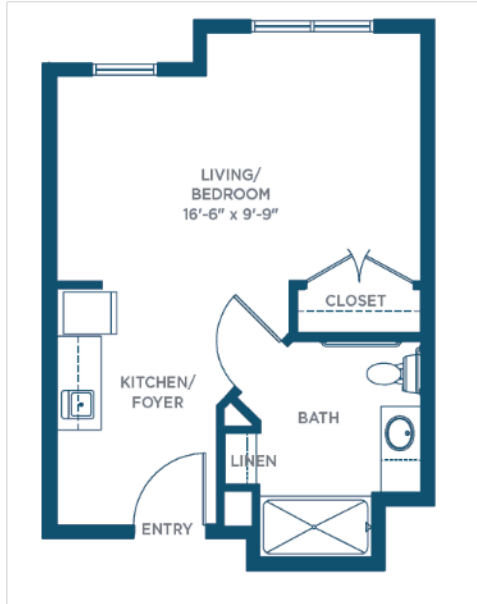
**The Aberdeen**

325 sq. ft. — 1 Bedroom/1 Bath



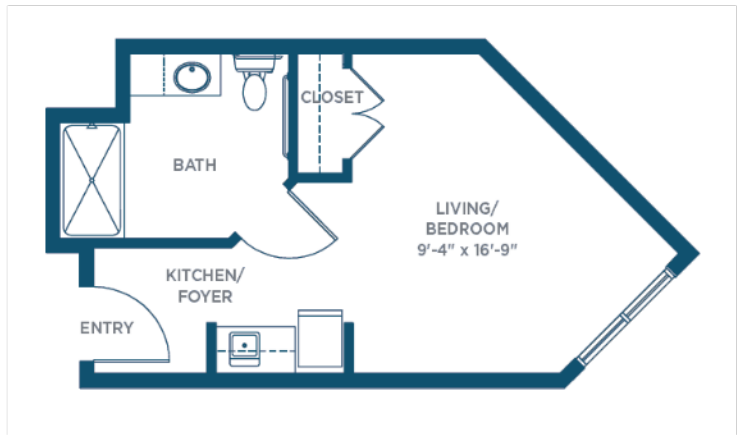
**The Braelinn**

405 sq. ft. — 1 Bedroom/1 Bath



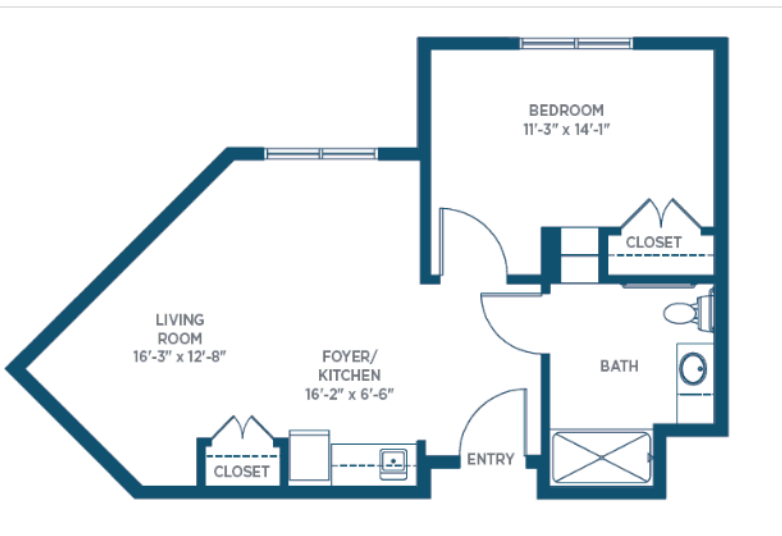
**The Clayton**

395 sq. ft. — 2 Bedroom/1 Bath



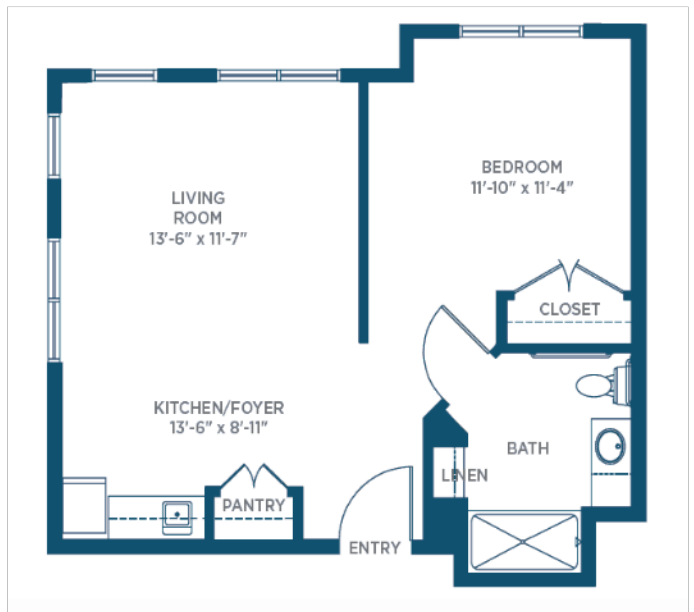
**The Fitzgerald**

600 sq. ft. — 1 Bedroom/1 Bath



**The Glenloch**

615 sq. ft. — 2 Bedroom/1 Bath





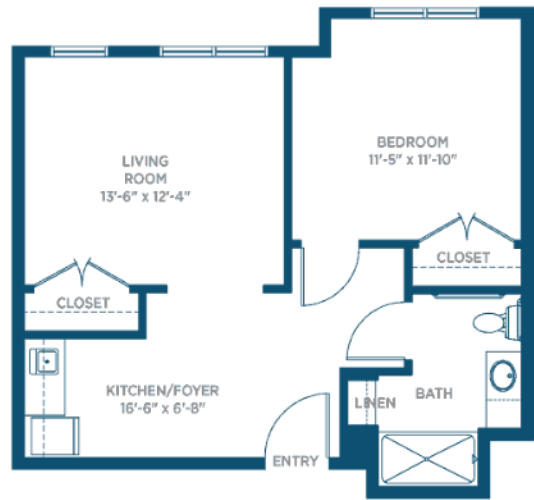
**The Kedron**

600 sq. ft. — 1 Bedroom/1 Bath



**The McIntosh**

625 sq. ft. — 2 Bedroom/1 Bath



**The Tinsley**

800 sq. ft. — 1 Bedroom/1 Bath



# Memory Care

---

## **Making the most of every day.**

If you have a loved one experiencing cognitive issues, it's encouraging to know there's a place like Somerby Peachtree City. A place where every day is designed to be as positive and productive as possible. To help ensure that happens, every staff member on our Memory Care team undergoes specialized training, resulting in a combination of expert care and extraordinary empathy that both your loved one – and your entire family – will appreciate.

### ***Some features of our Memory Care living include:***

- ***Daily on-site support of trained staff***
- ***Nutrition management***
- ***Assistance, including extra social and one-and-one time, to help each resident experience as much joy as possible every single day***
- ***Emotional support using proven techniques individualized for each resident***
- ***Family-centered consultation and involvement to help achieve consistently better outcomes***





## Memory Care apartments are available in two studio/1-bath floor plans.

They are designed to facilitate the highest levels of safety and care.

**Starting at \$7,595**

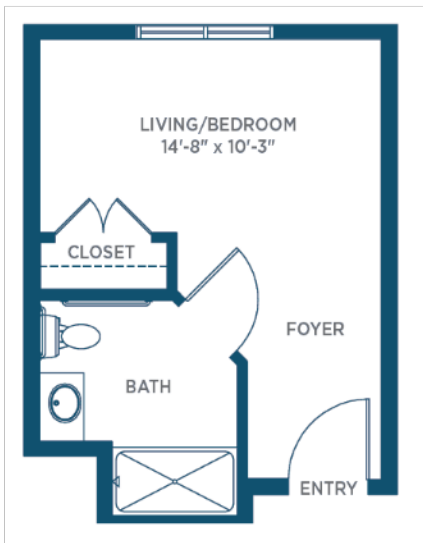
**All apartments include:**

- Individual thermostat controls
- Utilities (electricity, water, telephone)
- Housekeeping
- Trash service
- Pest control
- No property taxes



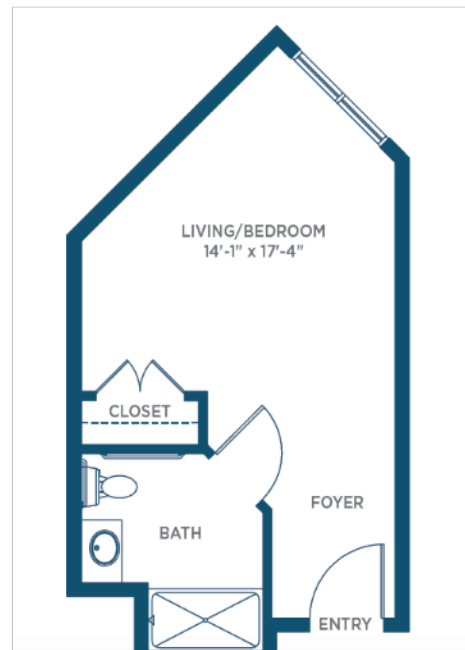
### The Hollis

305 sq. ft. — Studio/1 Bath



### The Wilksmoor

355 sq. ft. — Studio/1 Bath





# It's what's on the inside that counts.

---

When you're considering a senior living community, there are certain "must-haves." A choice of spacious apartments. A compassionate staff. Inviting meals you can look forward to. Outstanding care whenever care is needed.

At Somerby Peachtree City, we agree that these are, indeed, "must-haves." But as a Bridge Senior Living community, being great at those things is just the starting point, not the finish line. Because a great life demands more – much more – than simply being "good enough."



# A feast for the body and the soul.



If food is the foundation of healthy living, mealtime may just be the foundation of a healthy community. After all, breaking bread with friends and family has been a principal way of building relationships, stirring the heart, and sharpening the mind throughout history.

**At Somerby Peachtree City, we take the joy of mealtime seriously. Our two dining options were specifically created to provide both outstanding menu options and memorable moments with friends.**

## **The Château Restaurant**

Professional chefs prepare the meals at this upscale dining space. White linens, seasonal delights, and daily menu changes accentuate the dining experience. A perfect place to enjoy fresh flavors with a healthy side of lively conversation.

## **The Bistro**

For a more casual experience, stop by The Bistro. Supervised by the same chefs who oversee The Château, The Bistro offers lighter fare such as soups and sandwiches. Come, relax, and enjoy a bite and a laugh with some new friends while you swap stories.



Grow as a person, build stronger relationships, deepen your spirituality, expand your knowledge, and live with purpose.

# All it takes is a single Spark.

Will you find outstanding amenities at Somerby Peachtree City? Of course. How about activities? More than space here will allow us to describe. But before we talk about those, let's talk about this: Discover Your Spark™.

Discover Your Spark was developed by Bridge Senior Living to help our residents rekindle old hobbies and ignite new passions — to understand what styles and types of activities they enjoy the most and then suggest new avenues of exploring those passions from all angles. So you not only stay active, but you also grow as a person, build stronger relationships, deepen your spirituality, expand your knowledge, and live with purpose.

Our residents truly love Discover Your Spark and we believe you will, too. We also think you'll love all the wonderful amenities and activities you'll find at Somerby Peachtree City, including:

- *White linen dining at the Château Restaurant, featuring multiple entrée options*
- *Daily hot breakfast buffet*
- *Spark Station stocked with juice, fruit and snacks, available daily*
- *Recreational and social programming scheduled daily*
- *Fully equipped fitness center*



- *Activities and events tailored to individual interests and abilities*
- *Barbershop and salon with hair styling and manicures (additional charges apply)*
- *Community activities such as museum visits, theater and concert performances, and on-site speakers, events, and presentations*
- *On-site wellness clinic*
- *On-site fitness center with physical, speech, and occupational therapy services available*
- *Scenic walking trails*
- *Relaxing courtyards*
- *Scheduled transportation to off-site appointments and events*
- *Daily safety checks for all residents*
- *Medication management program*
- *Convenient in-house pharmacy*
- *In-residence doctor visits*
- *Telehealth*

# More than a touch of useful technology.

---

While it may be great fun to reminisce about days gone by, few of us would care to return to using party-line telephones or adjusting rabbit ears on the ole television.

**At Somerby Peachtree City, we don't just welcome the march of technological progress – we join in the innovation parade.**



From apps to virtual tours, here are a few of the ways we're making our residents' lives better via high-touch, high-tech solutions:

## **Bridge Senior Living App**

Somerby Peachtree City is operated by Bridge Senior Living. So, naturally, we use the Bridge Senior Living App. Powered by LifeLoop, this app offers a central hub for residents, their families, friends, and staff to stay connected by sharing personalized activity schedules, photos, messages, and more.

## **Telehealth**

The era of doctors making house calls is back – at least virtually. Not only do we offer technical support for your telehealth appointments, we even conduct appointments in the privacy of your room or apartment. It's convenient, safe, and thorough. Just what the doctor ordered.

## **Virtual Tours**

While we'd love to have you visit Somerby Peachtree City in person, we know finding the time to do so may be a bit of a challenge. So instead of waiting for a hole in your schedule to open up, feel free to take a virtual tour. Our community has been digitally scanned and recreated in an easy-to-navigate 360-degree setting, so you can wander the halls, explore the rooms, and check out the grounds from the comfort of your own home.



# Bridge Senior Living makes all the difference.

**BRIDGE  
SENIOR  
LIVING** Somerby Peachtree City is operated by Bridge Senior Living, recognized as one of the most innovative, senior living community management companies in the United States.

Beyond developing forward-thinking initiatives, such as the Bridge Senior Living App and Discover Your Spark™, Bridge Senior Living stands apart for its commitment to resident safety with the Bridge Safe program. Bridge Safe ensures that we have enhanced safety protocols in place to protect our residents and the resources to put those protocols into practice. From enhanced cleaning and guest screenings to daily check-ins to enhanced air filtration, Bridge Safe helps keep Somerby Peachtree City as happy a community as possible.



Bridge Senior Living continues to pursue improvements and innovations across all aspects of community life. We're proud to be part of their family and welcome the opportunity to tell you more about how Bridge makes life at Somerby Peachtree City better every day.



## An honest discussion about financial matters.

---

**At Somerby Peachtree City, we understand that the costs associated with moving into a senior living community are one of the main concerns for potential residents and their families.**

So we're very upfront with our prices and invite you to contact one of our expert associates with any questions you may have.

Apartments at Somerby Peachtree City start at \$4,295 per month for Independent Living, \$4,795

per month for Assisted Living, and \$7,595 per month for Memory Care. These prices are inclusive of rent, meals, utilities, maintenance, and housekeeping. Plus, you don't have to pay any property or real estate taxes.

There are many options when it comes to financing a life at Somerby Peachtree City, including retirement savings, proceeds from selling your existing house, selling stocks and securities, etc. The options aren't quite limitless, but they are numerous. So again, we invite you to contact one of our experts to discuss matters further. And it truly will be a discussion and not a sales call. We promise.









## What else would you like to know?

---

Seriously, we'd really love to hear from you and help you learn even more about what makes Somerby Peachtree City such a wonderful place. Yes, everyone here may be a bit biased, but we believe residents and staff alike would tell you that being a part of this community was the right decision for them.

Is it the right decision for you? That's not for us to say. After all, everyone's needs and situations are different. But you'll never know for sure unless you stop by and take a look around for yourself, which you are cordially invited to do.

**To schedule your own visit at Somerby Peachtree City, please call 866-699-3986.** We promise it will be a zero-pressure experience.

**Take a tour, meet some residents, meet the staff, ask all the questions you like – even enjoy lunch if you time it right! Just give us a call and we'll make it happen.**

**To schedule a visit or for more information about Somerby Peachtree City, call 866-699-3986.**

**Somerby Peachtree City  
200 Rock-A-Way Road  
Peachtree City, GA 30269**